



# ZEISS Planar T\* 1.4/50



## Features

- Fast f/1.4 aperture
- Precise manual focusing
- Robust full-metal construction
- Fixation for focus and aperture
- Identical color reproduction of all models
- For industrial cameras with F-Mount up to sensor sizes of 24x36 mm or 43mm line sensors.

### ZF-I: Industrial Edition

Features special screws to fix focus and aperture settings even in rough situations.

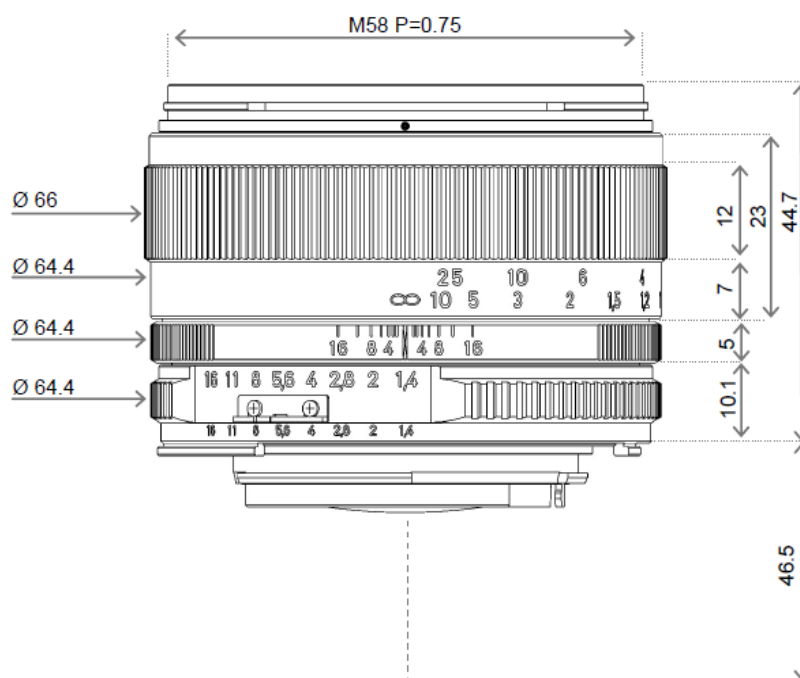
### Camera Mounts

Available with ZF.2, EF and M42 mount.



# ZEISS Planar T\* 1.4/50

## Technical Specifications



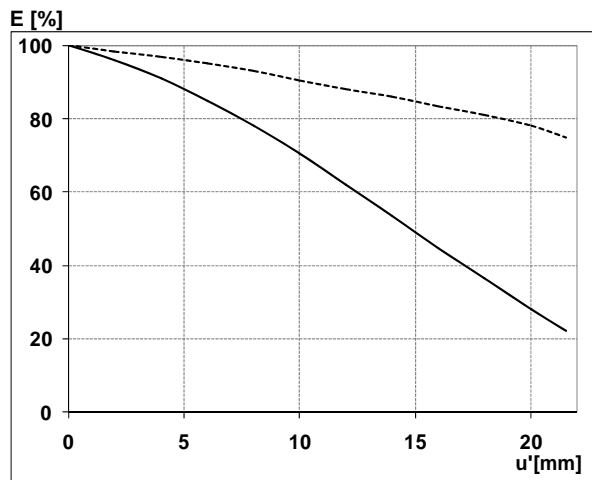
<b>Focal length</b>	50 mm
<b>Aperture range</b>	f/1.4 – f/16 (1/ 2 stop intervals)
<b>Number of elements / groups</b>	7 / 6
<b>Min. working distance (object to sensor)</b>	450 mm (1.48 ft.) – ∞
<b>Min. free working distance</b>	351mm (1.15 ft.) – ∞
<b>Angular field* (diag. / horiz. / vert.)</b>	45 / 38 / 26 °
<b>Max. diameter of image field</b>	43 mm (1.7")
<b>Flange focal length</b>	F-Mount: 46.5 mm (1.8"); M42-Mount: 45,5 mm
<b>Coverage at close range</b>	160 x 240 mm (6.3 x 9.4"), line 288 mm (11")
<b>Image ratio at close range</b>	1:6.7
<b>Filter-thread</b>	M 58 x 0.75
<b>Weight</b>	330 g (0.66 lbs.)
<b>Camera mount</b>	F bayonet, M42, EF

\* referring to 35 mm format



# ZEISS Planar T\* 1.4/50

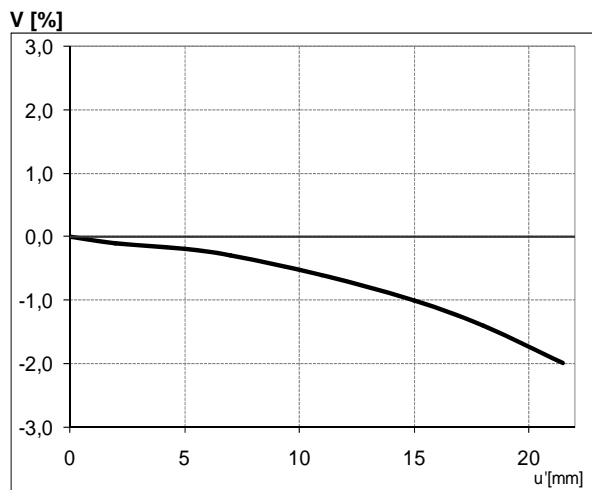
## Relative Illuminance\*



The relative illumination shows the decrease in image brightness from the image center to the edge in percent.

— f-number 1.4  
... f-number 4

## Relative Distortion\*



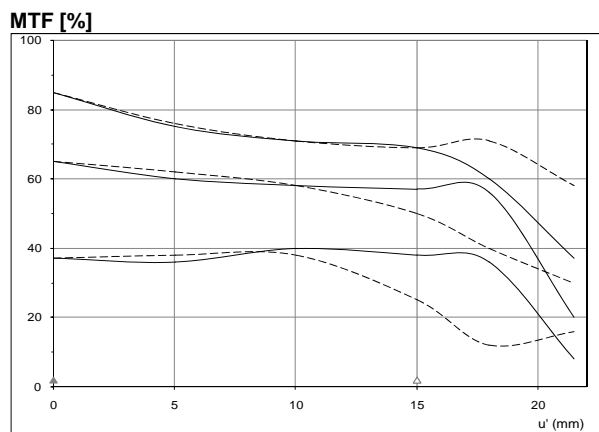
The relative distortion shows the deviation of the actual image height from the ideal one in percent.

\*Data for infinite focus setting



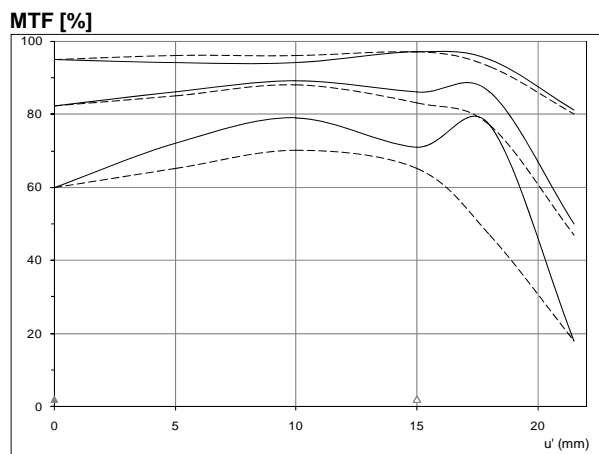
# ZEISS Planar T\* 1.4/50

## MTF Charts\*



The Modulation Transfer (MTF) as a function of image height ( $u$ ) and slit orientation (sagittal, tangential) has been measured with white light at spatial frequencies of  $R = 10, 20$  and  $40$  cycles/mm. The MTF charts are valid for the ZF, ZF-I version and for white light.

f-number 1.4  
— Saggital  
... Tangential

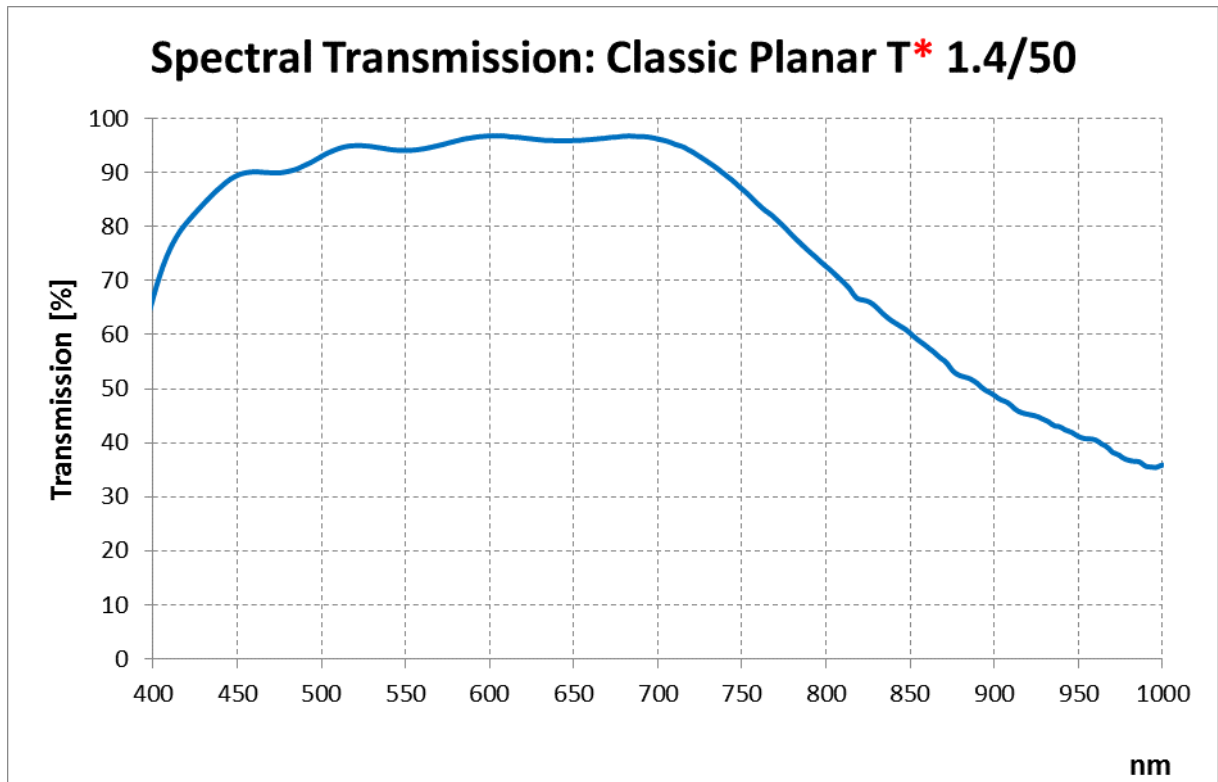


f-number 4  
— Saggital  
... Tangential

\*Data for infinite focus setting / Not for IR version

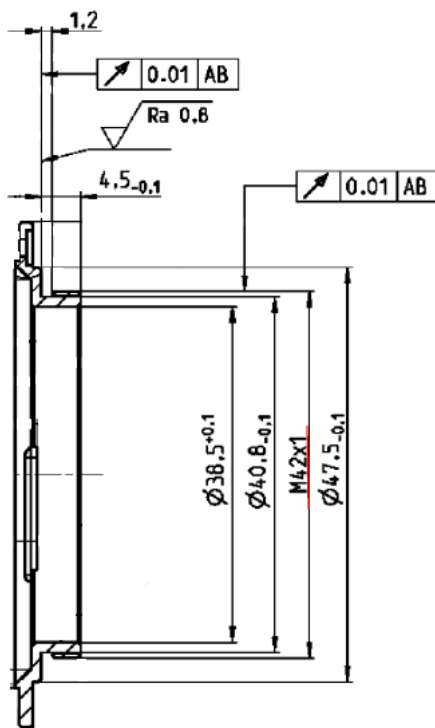


# ZEISS Planar T\* 1.4/50





# ZEISS Planar T\* 1.4/50



M42 Mount for 45,5 mm Flange Focal Distance

The diameter of the camera/lens adapter must not exceed 55 mm at the lens side!