

## SRMTPW-24R-AL

### 24" Sunlight Readable Waterproof Touch Screen Monitor



- 1,000 nits Brightness
- Produces Clear, Sharp Images Even in Direct Bright Sunlight
- Projected Capacitive Touch
- NEMA 4X Waterproof Aluminum Enclosure
- Video Inputs: VGA, HDMI, DisplayPort
- Ambient Light Sensor
- Auto Re-Start After Power Loss
- Can Be Customized to Meet Your Needs
- 3-Year Warranty

## SUNLIGHT READABLE OUTDOOR WATERPROOF TOUCH SCREEN

The SRMTPW-24R-AL are 24" waterproof touch screen monitors. These touchscreen monitors feature at least 1000 nits brightness. These outdoor waterproof touch screens have a 16:9 aspect ratio. We design this 24" outdoor touch display for use in direct bright sunlight. Consequently, they are also perfect for other high ambient-light conditions. They utilize state-of-the-art LED backlights. The 1000 nits brightness is over 3 to 5 times brighter than standard monitors. For example, standard monitors are only 200-300 nits brightness. Therefore, the result is an amazingly bright screen. This full HD resolution will provide you with crystal-clear images, even with direct sunlight on the face of the screen.

They are Projected Capacitive touch technology. Consequently, they can be activated via an exposed finger, and also when using thin latex or cotton gloves. The multi-touch capability allows up to 10 simultaneous finger operations to select zoom, flick, and other functions. It is also unaffected by dirt, grease or moisture on the glass surface.

### RUGGED TOUCH SCREEN DISPLAY

These 24" waterproof touch screen with high brightness are extremely rugged. For example, we build them with true industrial-grade components. Furthermore, they receive our exclusive TRU-Tuff treatment. The TRU-Tuff process includes RTV silicone on all connections and critical components. Additionally, all wires are dressed, tie-wrapped and secured. Lastly, we apply ThreadLock to all screws. The rugged Waterproof aluminum enclosure ensures maximum shock and vibration resistance.

### 24" OUTDOOR TOUCH SCREEN WITH RUGGED, LIGHTWEIGHT ALUMINUM ENCLOSURE

These large touchscreen monitors feature a rugged waterproof enclosure. It is an aluminum, NEMA 4X rated waterproof enclosure. It is impervious to liquids, rust or corrosion. These 24" outdoor touch screen monitors will withstand the elements outdoors. They are also ideal for and wash-down environments. Industrial plants and food processing plants utilize this type of waterproof touch-screen for their challenging environments.

### OUTDOOR TOUCH SCREEN WITH EXTREME OPERATING TEMPERATURES

We design the SRMTPW-24R-AL 24" waterproof touch screen to operate in nearly any environmental conditions. Whether in frigid conditions or blazing heat, these sunlight displays will survive and thrive. To clarify, these monitors will operate in temperatures down to -4°F (-20°C). They will also withstand brutal heat. Moreover, operating temperatures go up to 158°F (70°C). Additionally, the rugged aluminum enclosure assures these 24" outdoor touch screens will provide years of reliable performance. Specifically, typical MTBF for these monitors is 50,000 hours.

## TOUCHSCREENS DEPLOYED WORLDWIDE

Our 24" outdoor touch screens have been deployed in a wide range of demanding industries. For example, military, law enforcement, aviation and entertainment benefit from our large touchscreen monitors. They are also deployed in the inspection, marine, energy, and industrial, as well as transportation industries. Furthermore, TRU-Vu monitors are backed by our full 3-Year Warranty. This will ensure you of many years of reliable service.

We design all TRU-Vu industrial LCD monitors for use in demanding applications. Every TRU-Vu monitor utilizes industrial-grade components. We also provide high-end LCD panels not found in retail/consumer-grade monitors. This ensures superior image quality, improved performance and greater durability.

## OUR TECHNICAL EXPERTS ARE READY TO HELP IND THE BEST OUTDOOR TOUCH SCREEN

TRU-Vu has over 540 LCD monitors and touch screens on our site. Selecting the ideal equipment or touch screen solution may be a bit overwhelming. To help narrow-down the choices, check out our [Advanced Search Tool](#). For example, this enables you filter by your own specific search requirements. For further information, view [Sunlight Readable and Daylight Readable](#) to see our full line-up of industrial-grade monitors which specifically highlights all of our high brightness monitors and sunlight readable touch screens. You may view them in all the sizes and configurations available. Shop by size [21.5" to 65" monitors](#) see our full line of [Touch Screen Monitors](#), or visit our wide range of [LCD monitor mounts and stands](#). Custom OEM LCD Displays and Private Label Monitors are also an option if you have specific requirements.

Finally, our team members are ready to help! We can determine the exact solution that will meet your specific needs. Certainly, TRU-Vu will help provide crystal-clear images for your operating requirements. Call (847) 259-2344 today to speak with one of our specialists. Above all, we will listen. It's one of the things we do best. Our professional advisors will ensure the monitor or touch screen you receive will be and do everything you had hoped it would!

If you prefer, fill out a [quick form](#) with your requirements. We will guide you to the proper models that will work best.

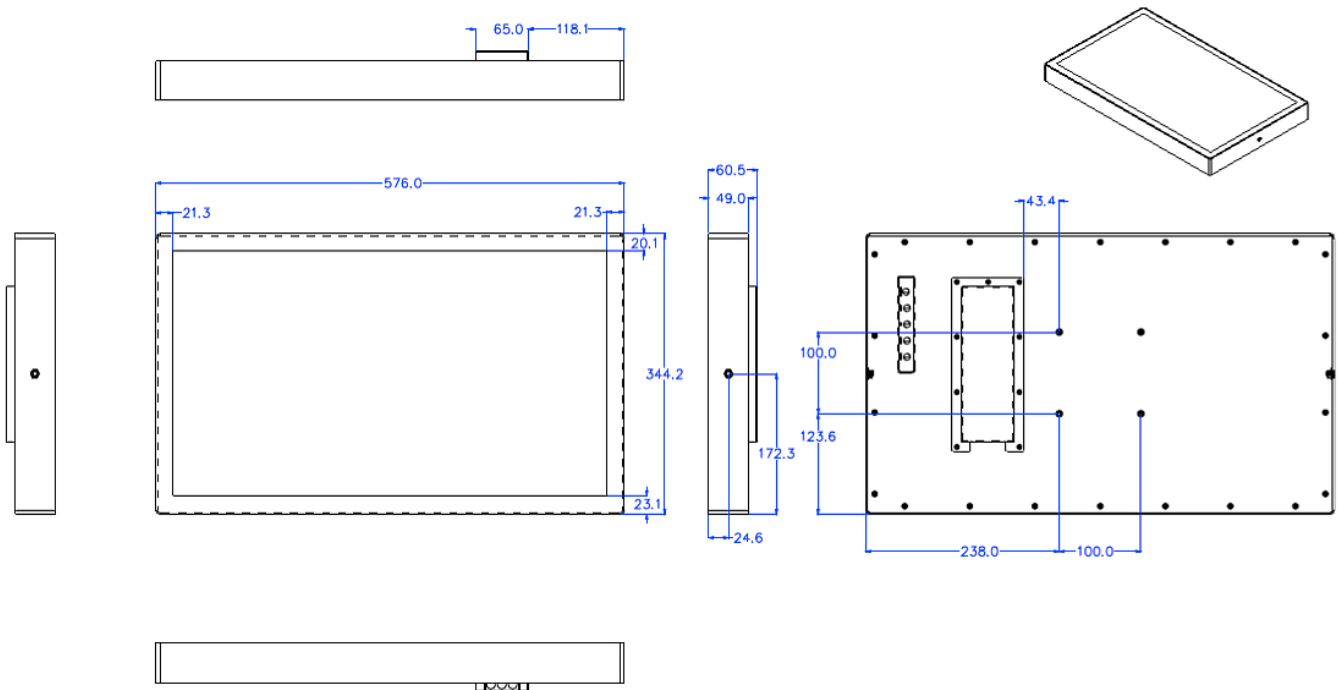
## SPECIFICATIONS

	<b>SRMTPW-24R-AL</b>
LCD Panel	24" Color LCD; LED Backlights
Display Resolution	1920 x 1080 (Full HD)
Touch Screen Type	Projected Capacitive
Touch Interface	USB
Viewable Area	20.92" (W) x 11.76" (H) (531.4 x 298.9 mm)
Pixel Pitch	0.277 mm
Display Colors	16:7M
Aspect Ratio	16:9
Brightness	1,000 nits
Contrast Ratio	5,000:1
Viewing Angle	178°(H) x 178°(V)
Response Time	25 ms
Control	OSD (On-Screen Display) via Rear Pushbuttons
Video Inputs	VGA, HDMI, DisplayPort
Power Requirement	9-36VDC (2.5 mm Locking Barrel Plug Connector)
Power Consumption	42W

<b>SRMTPW-24R-AL</b>	
Enclosure	Aluminum
Enclosure Rating	NEMA 4X
Mounting	100 x 100 mm Rear VESA Mount Holes
Operating Temperature	-4° to 158°F (-20° to +70°C)
Humidity	5-90% RH
Shock	50G Half-sine
Vibration	1.5G RMS 10-200Hz
Dimensions	22.68" (W) x 13.55" (H) x 2.38" (D) (576 x 344.2 x 60.5 mm)
Weight	12.73 lbs. (5.77 kg)
Warranty	3 Years

Note: Specifications subject to change without notice.

**DIMENSIONS (MM)**



**Standard Accessories:**

- USB Cable
- Power Pigtail with Locking Connector

**Available Options:**

- 90-240 VAC via PS-12-80W Power Supply
- AC Adapter
- DVI Input
- HD-SDI Input
- Private Label

- Other Customer-Specific Modifications
- Waterproof Outdoor Wall Mount Bracket (MBX-670)