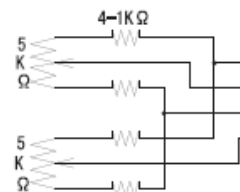


① IRIS CABLE

(+)	RED	INPUT VOLTAGE
(-)	BLACK	GROUND
	WHITE	VIDEO SIGNAL
	GREEN	REMOTE CONTROL

② MOTOR CABLE

(+)	GREEN	FOCUS NEAR
(+)	BLACK	FOCUS FAR
(+)	YELLOW	ZOOM IN
(+)	RED	ZOOM OUT



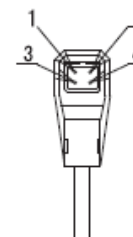
(+)	BROWN	POT. SUPPLY
	BLUE	FOCUS ERROR
(-)	WHITE	POT. RETURN
	GRAY	ZOOM ERROR

SPECIFICATION

1.	USE	FOR 1/3" COLOR B/W CAMERA	
2.	FOCAL LENGTH	f=5.5 ~ 165 mm	
3.	IRIS RANGE	F=1.8 ~ 500 ~ Close	
4.	IMAGE SIZE	φ 6 (4.8x3.6)	
5.	BACK FOCAL LENGTH	15.5 mm in air	
6.	FLANGE FOCAL LENGTH	12.5 mm in air	
7.	FOCUS RANGE	∞ ~ 1.8 m	
8.	FIELD ANGLE	DIA. (W)	(T) 2.10 °
		HOR.	47.6 ° 1.70 °
		VER.	33.9 ° 1.30 °
9.	FIELD OF VIEW AT W.L.D.	DIA.	1.879 mm 62.8 mm
		HOR.	1.492 mm 50.6 mm
		VER.	1.107 mm 38.1 mm
10.	DISTORTION	-2.5 % 0.7 %	
11.	LENS CONSTRUCTION	12 GROUPS 14 ELEMENTS	
12.	CLEAR APERTURE	FRONT φ6.0	REAR φ10.5
13.	EXIT PUPIL POSITION	-70.0 mm (format)	
14.	WEIGHT	850 g ( 880 g)	

DC (DIRECT CONTROL)

DRIVE COIL	RESISTOR	190Ω (20° C)
	COLOR	RED(+) BLACK
BRAKE COIL	RESISTOR	1150Ω (20° C)
	COLOR	YELLOW(+) GREEN
DRIVE VOLT.	OPEN	LESS THAN +4V
	CLOSE	OVER THAN 0V
		W/CLOSING SPRING



AUTO IRIS  
1/3" F1.8/5.5 ~ 165mm

LMZ300AM AMP  
LMZ300AMDC AMPDC