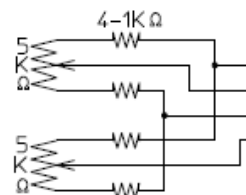


① IRIS CABLE  
(VIDEO TYPE)

RED +8V~+16V 35mA (T9V)  
 BLACK GROUND  
 WHITE VIDEO SIGNAL >100kΩ  
 GREEN REMOTE CONTROL  
 0.5~1.0Vpp

② MOTOR CABLE

(+) GREEN FOCUS NEAR  
 (+) BLACK FOCUS FAR  
 (+) YELLOW ZOOM IN  
 (+) RED ZOOM OUT



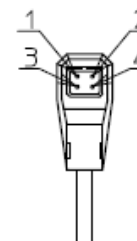
(+) BROWN POT. SUPPLY  
 BLUE FOCUS ERROR  
 (-) WHITE POT. RETURN  
 GRAY ZOOM ERROR

SPECIFICATION

1. USE	FOR 1/2" COLOR ,B/W CAMERA	
2. FOCAL LENGTH	f=15~375mm	
3. IRIS RANGE	F= 2.3 ~ 360	
4. IMAGE SIZE	φ 8 ( 6.4 x 4.8 )	
5. BACK FOCAL LENGTH	24 mm in air	
6. FLANGE FOCAL LENGTH	17.526 mm in air	
7. FOCUS RANGE	∞ ~ 2.5 m	
8. FIELD ANGLE	DIA.	(w) 28.7° (T) 1.24°
	HOR.	23.2° 0.99°
	VER.	17.6° 0.75°
9. DISTORTION (TV)	0.3 %	0.4 %
10. LENS CONSTRUCTION	12 GROUPS 16 ELEMENTS	
11. CLEAR APERTURE	FRONT φ10.4	REAR φ11.7
12. WEIGHT	2.58Kg (DP)	

DC (DIRECT CONTROL)

DRIVE COIL	RESISTOR	190Ω (20°)
	COLOR	RED(+) 3pin BLACK 4pin
BRAKE COIL	RESISTOR	1150Ω (20°)
	COLOR	YELLOW(+) 2pin GREEN 1pin
	DRIVE VOLT.	OPEN LESS THAN +4V CLOSE OVER THAN 0V W/CLOSING SPRING



品名 1/2" F2.3/15-375mm  
 LMZ375AMP-DC  
 LMZ375AM-DC  
 品番 LMZ375AMP  
 品番 LMZ375AM